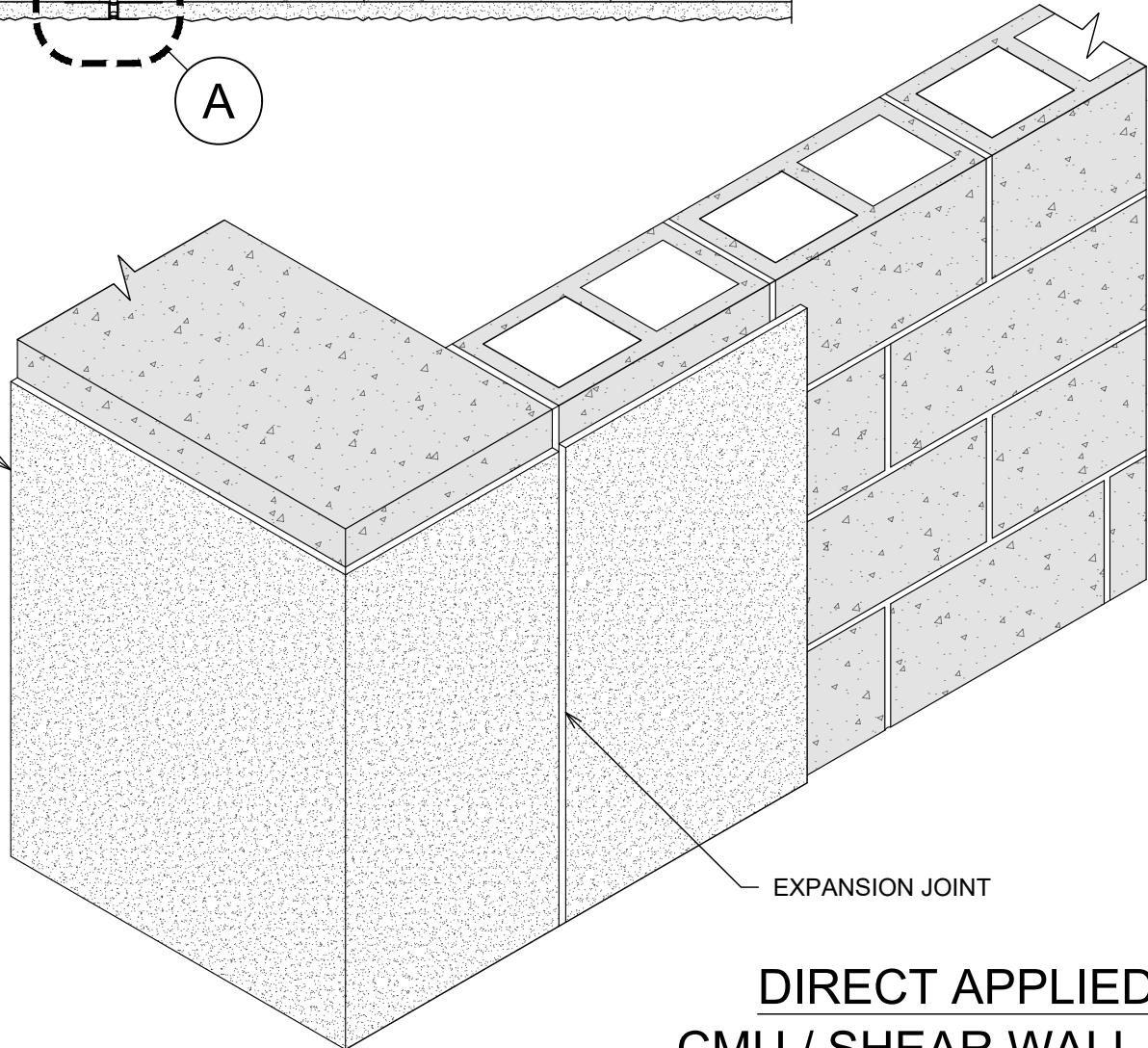


STUCCO SYSTEM



EXPANSION JOINT

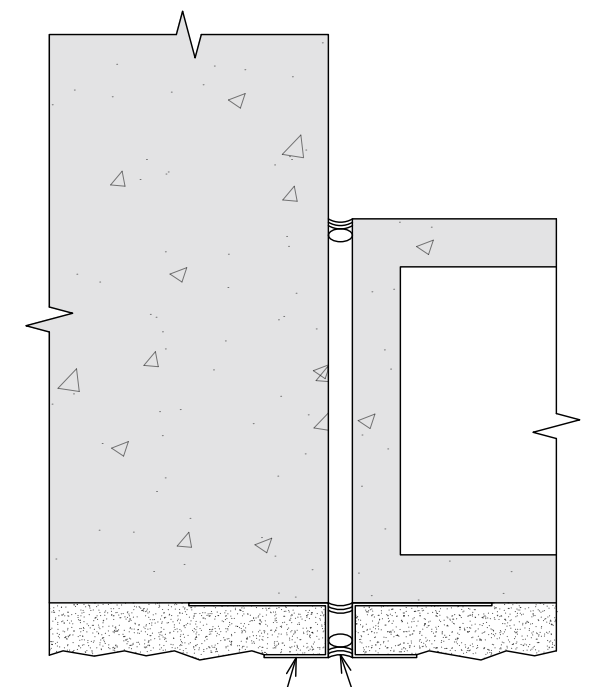
**DIRECT APPLIED ON
CMU / SHEAR WALL DETAIL**

SURFACE PREPARATION NOTES:

1. SPECIFY BLOCK SURFACE CHARACTERISTICS - COARSE.
2. TEXTURE IS NOT A COAT.

NOTES:

1. THIS OPTION ALLOWS FOR DEVIATIONS IN VERTICAL ALIGNMENT BETWEEN CIP AND CMU AND DIFFERENTIAL MOVEMENT BETWEEN TWO SEPARATE STRUCTURAL ELEMENTS. THERE SHOULD BE A MASONRY CONTROL JOINT AT THIS LOCATION.
2. DOUBLE-BACK OR DOUBLE-UP COAT. THE BROWN COAT PLASTER APPLIED TO THE SCRATCH COAT PLASTER BEFORE THE SCRATCH COAT PLASTER HAS SET.



PLASTERSTOP CASING BEAD

SEALANT ON BOND BREAKER BACKER ROD AND SEALANT

DETAIL 'A' (OPTIONAL)

LEGEND

- SHEATHING, 'OSB', PLYWOOD, DENSGLOSS
- SELF ADHERED FLASHING
- PLASTER ACCESSORY
- DRAINAGE PLANE WATER RESISTANT BARRIER (WRB)
- BOND BREAK WATER RESISTANT BARRIER (WRB)
- SELF FURRING (SF) LATH
- SCRATCH COAT
- STUCCO
- SILL SEAL
- FOAM ORNAMENTALS
- GALVANIZED METAL FLASHING



Florida Lath & Plaster Bureau (FLAPB) details are for illustration of construction methods. They are to be used as guidelines by the design and/or construction team. You should consult with your design and/or construction specialists for specific construction requirements. Some modification may be required for specific project conditions or to meet local building code. FLAPB makes no representation as to the suitability of any detail for specific use at any location on any project. A qualified, licensed architect or engineer must be consulted to specify the detail for any specific use at any location on a project.