

1. HORIZONTAL CONTROL JOINT

- FINISH COAT
- TEXTURE
- BROWN COAT
- SCRATCH COAT
- CONT. SUBSTRATE SHEATHING
- 6" STRIP SAF (NOT REQD.)
- LATH (SEE NOTES)
- WRB-BOND BREAK
- WRB-DRAINAGE PLANE

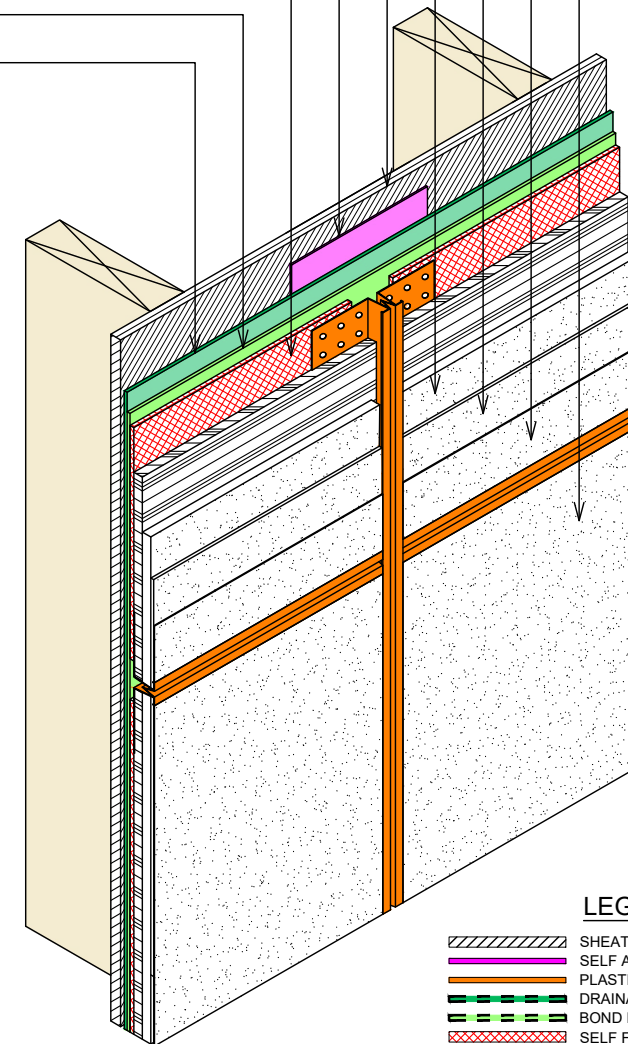
NOTES

- A. DISCONTINUOUS LATH BEHIND CJ PER ASTM C1063.
- B. DISCONTINUOUS LATH OVER CJ BY SOME LATHERS.
- C. NOTE: METHOD A OR B ABOVE WILL AFFECT THE DEPTH OF THE GROUND OF THE CONTROL JOINT ACCESSORY.

CONSIDERATIONS

1. CJ IS INTENDED TO PROVIDE LOCATION FOR STUCCO CRACKS TO OCCUR DURING THE CURING PERIOD.
2. SUBSTRATE MOVEMENT IS EXPECTED TO BE MINIMAL AT CJ.
3. 6" STRIP OF SAF BEHIND THE CJ MAY ENHANCE WATER RESISTANCE AT THE JOINT.

3. HORIZONTAL AND VERTICAL CONTROL JOINTS



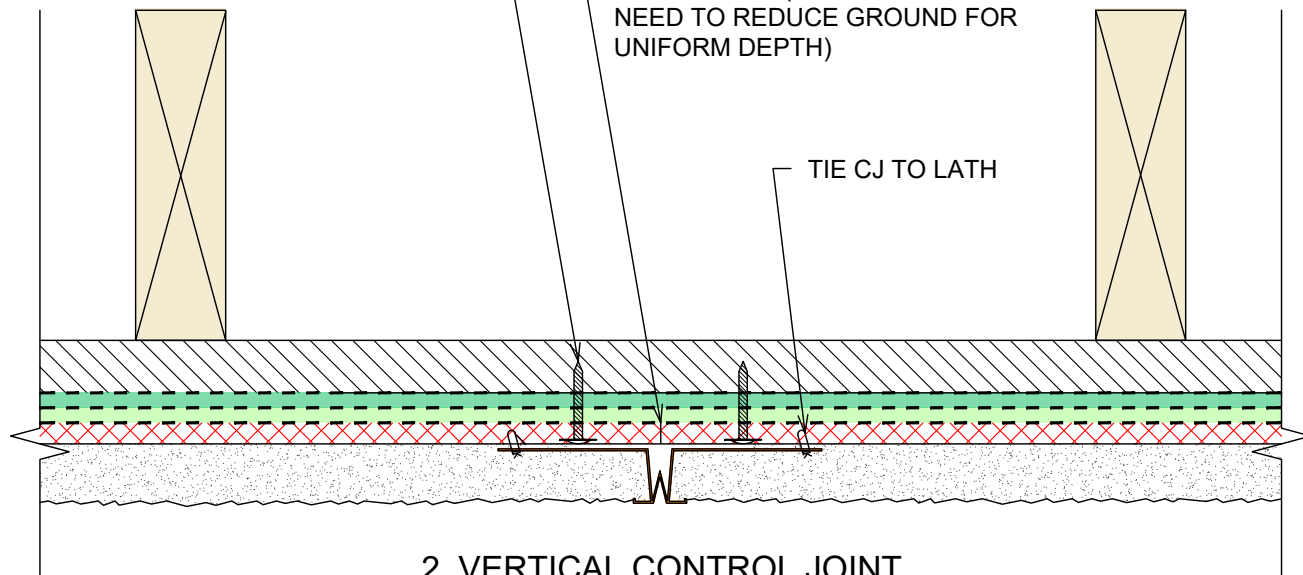
LEGEND

- SHEATHING, 'OSB', PLYWOOD, DENSGLOSS
- SELF ADHERED FLASHING
- PLASTER ACCESSORY
- DRAINAGE PLANE WATER RESISTANT BARRIER (WRB)
- BOND BREAK WATER RESISTANT BARRIER (WRB)
- SELF FURRING (SF) LATH
- SCRATCH COAT
- STUCCO
- SILL SEAL
- FOAM ORNAMENTALS
- GALVANIZED METAL FLASHING

1/2 INCH CORROSION-RESISTANT SCREWS.

CJ CAN BE APPLIED BEFORE OR AFTER LATH, (CJ OVER LATH MAY NEED TO REDUCE GROUND FOR UNIFORM DEPTH)

TIE CJ TO LATH



2. VERTICAL CONTROL JOINT



Florida Lath & Plaster Bureau (FLAPB) details are for illustration of construction methods. They are to be used as guidelines by the design and/or construction team. You should consult with your design and/or construction specialists for specific construction requirements. Some modification may be required for specific project conditions or to meet local building code. FLAPB makes no representation as to the suitability of any detail for specific use at any location on any project. A qualified, licensed architect or engineer must be consulted to specify the detail for any specific use at any location on a project.